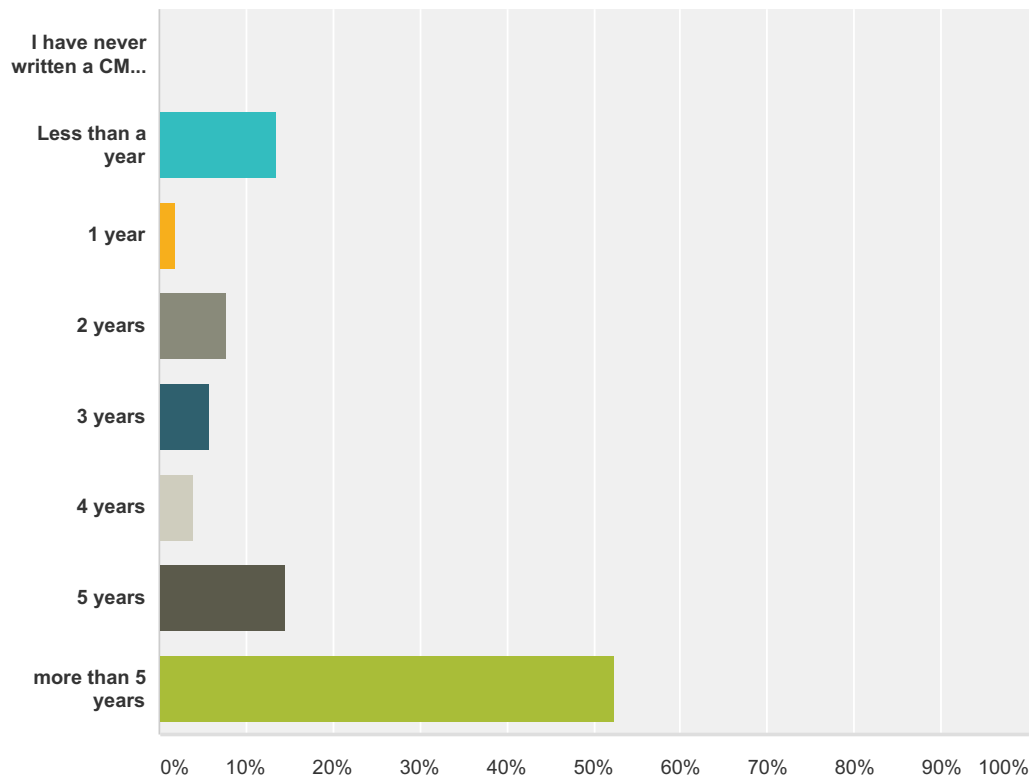


### Q1 How long has it been since you wrote your first CME needs assessment?

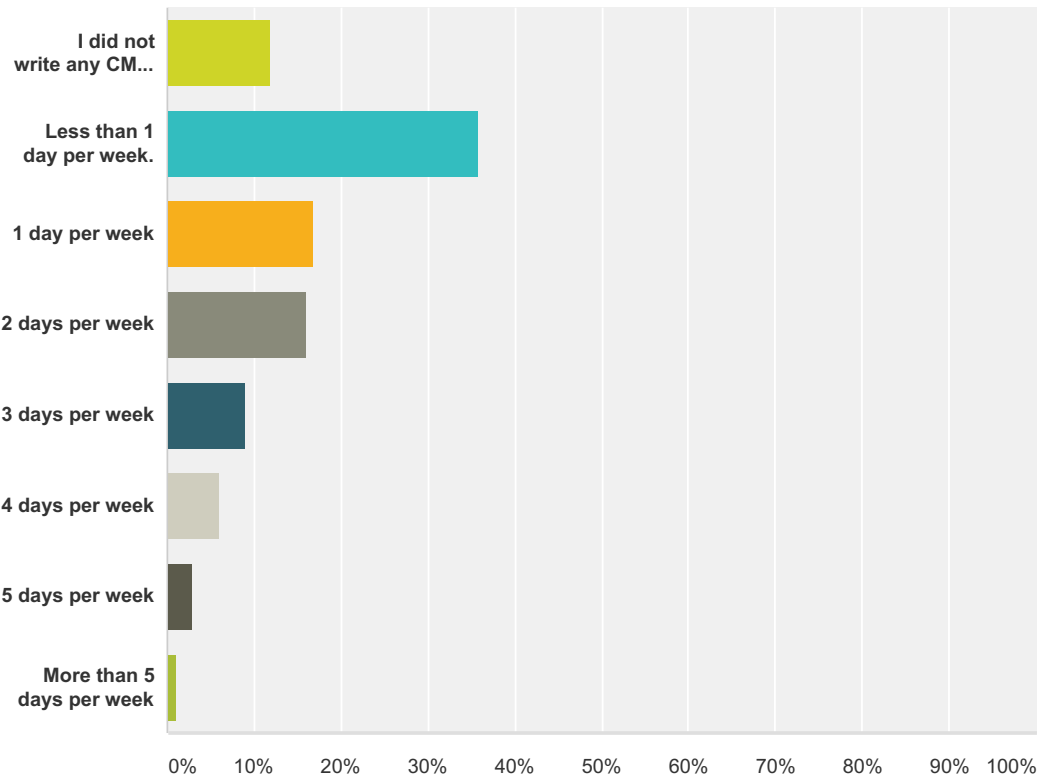
Answered: 103 Skipped: 1



| Answer Choices                              | Responses  |
|---|------------|
| I have never written a CME needs assessment | 0.00% 0    |
| Less than a year                            | 13.59% 14  |
| 1 year                                      | 1.94% 2    |
| 2 years                                     | 7.77% 8    |
| 3 years                                     | 5.83% 6    |
| 4 years                                     | 3.88% 4    |
| 5 years                                     | 14.56% 15  |
| more than 5 years                           | 52.43% 54  |
| <b>Total</b>                                | <b>103</b> |

### Q2 Over the past 6 months, roughly how many days per week did you spend writing CME needs assessments?

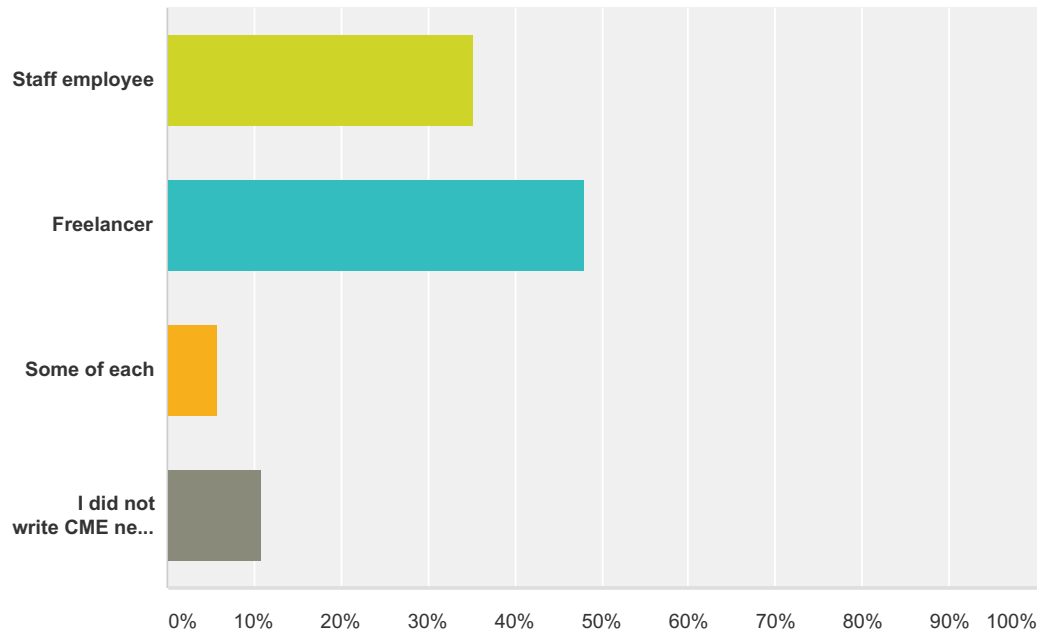
Answered: 100 Skipped: 4



| Answer Choices  | Responses  |
|---|------------|
| I did not write any CME needs assessments in the past 6 months. | 12.00% 12  |
| Less than 1 day per week.                                       | 36.00% 36  |
| 1 day per week  | 17.00% 17  |
| 2 days per week   | 16.00% 16  |
| 3 days per week   | 9.00% 9    |
| 4 days per week   | 6.00% 6    |
| 5 days per week   | 3.00% 3    |
| More than 5 days per week                                       | 1.00% 1    |
| <b>Total</b>  | <b>100</b> |

### Q3 In the past 6 months, did you write CME needs assessments as a staff employee or as a freelancer?

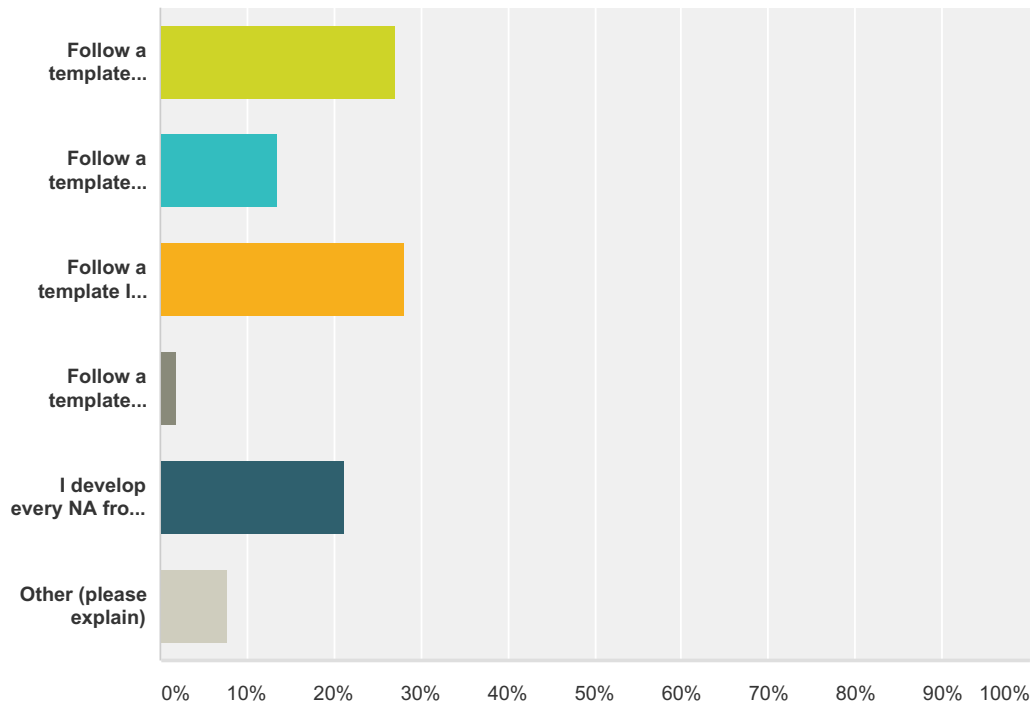
Answered: 102 Skipped: 2



| Answer Choices  | Responses  |
|---|------------|
| Staff employee  | 35.29% 36  |
| Freelancer  | 48.04% 49  |
| Some of each  | 5.88% 6    |
| I did not write CME needs assessments in the past 6 months. | 10.78% 11  |
| <b>Total</b>  | <b>102</b> |

### Q4 Which one of the following best describes how you write needs assessments?

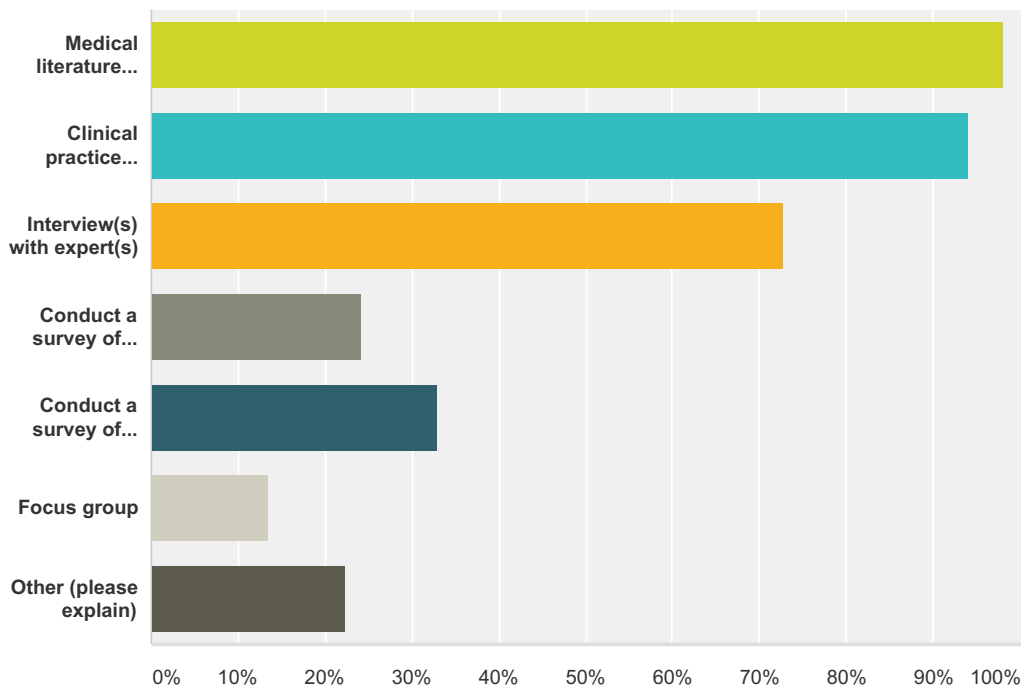
Answered: 103 Skipped: 1



| Answer Choices                             | Responses  |
|--|------------|
| Follow a template provided by my client(s) | 27.18% 28  |
| Follow a template provided by my employer  | 13.59% 14  |
| Follow a template I developed myself       | 28.16% 29  |
| Follow a template provided by someone else | 1.94% 2    |
| I develop every NA from scratch            | 21.36% 22  |
| Other (please explain)                     | 7.77% 8    |
| <b>Total</b>                               | <b>103</b> |

### Q5 What sources of information do you use when identifying professional practice gaps? (Select all that apply.)

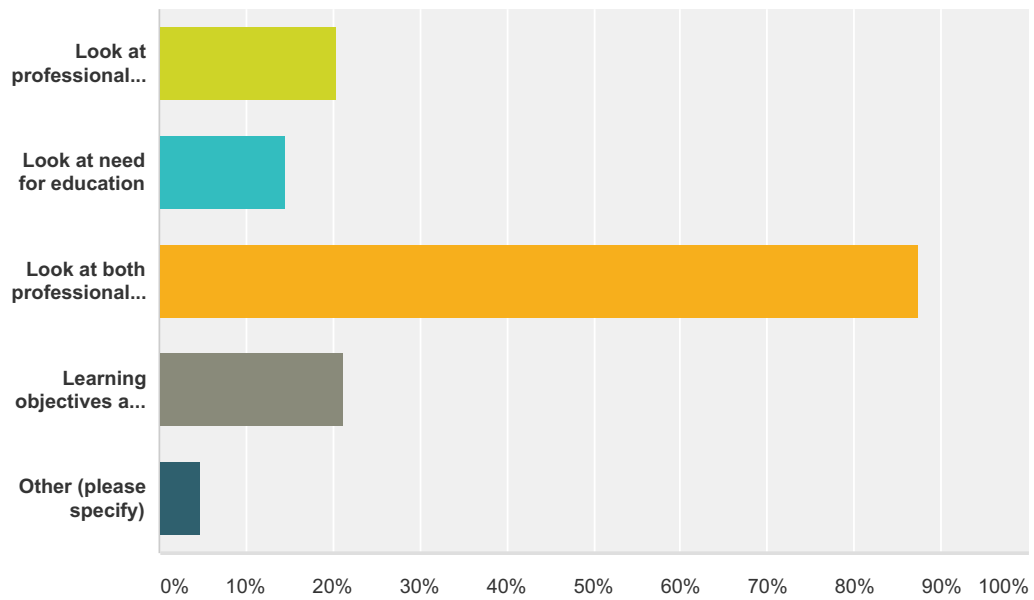
Answered: 103 Skipped: 1



| Answer Choices                                  | Responses  |
|---|------------|
| Medical literature search                       | 98.06% 101 |
| Clinical practice guidelines                    | 94.17% 97  |
| Interview(s) with expert(s)                     | 72.82% 75  |
| Conduct a survey of experts                     | 24.27% 25  |
| Conduct a survey of rank-and-file practitioners | 33.01% 34  |
| Focus group                                     | 13.59% 14  |
| Other (please explain)                          | 22.33% 23  |
| <b>Total Respondents: 103</b>                   |            |

### Q6 How do you formulate learning objectives? (Select all that apply.)

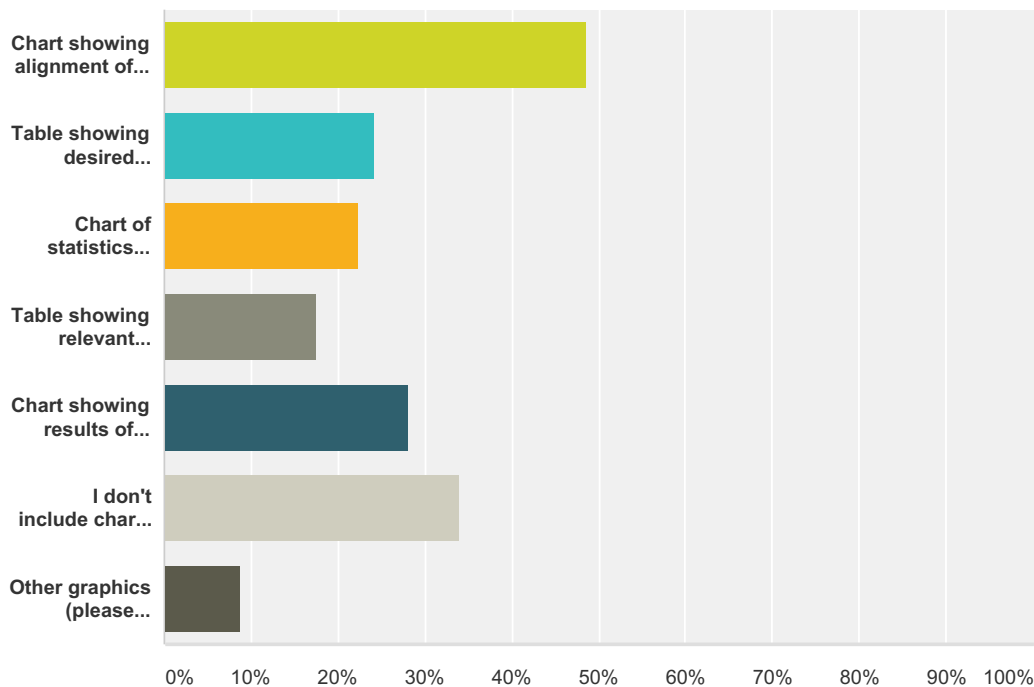
Answered: 103 Skipped: 1



| Answer Choices   | Responses |
|--|-----------|
| Look at professional practice gaps                         | 20.39% 21 |
| Look at need for education                                 | 14.56% 15 |
| Look at both professional gaps and need for education      | 87.38% 90 |
| Learning objectives are predefined based on client's needs | 21.36% 22 |
| Other (please specify)                                     | 4.85% 5   |
| <b>Total Respondents: 103</b>                              |           |

### Q7 What type of graphics, if any, do you include in a typical needs assessment? (Select all that apply.)

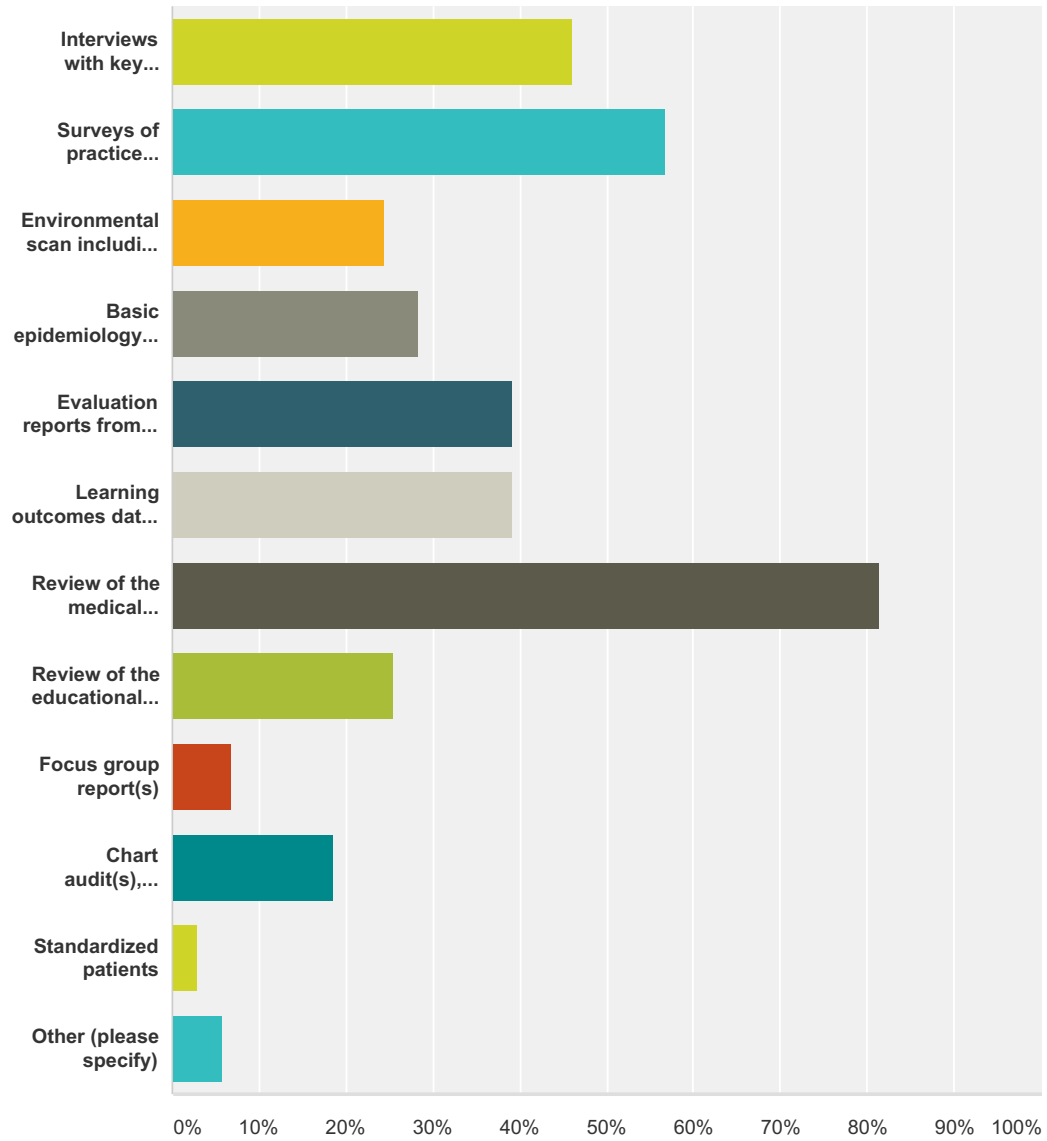
Answered: 103 Skipped: 1



| Answer Choices   | Responses |
|--|-----------|
| Chart showing alignment of practice gaps with learning objectives and desired outcomes | 48.54% 50 |
| Table showing desired outcomes versus Moore's levels of learning outcomes              | 24.27% 25 |
| Chart of statistics showing effect size(s) from previous learning activities           | 22.33% 23 |
| Table showing relevant clinical trials in client's therapeutic area of interest        | 17.48% 18 |
| Chart showing results of clinician survey related to practice gaps                     | 28.16% 29 |
| I don't include charts, tables, or graphics  | 33.98% 35 |
| Other graphics (please specify)  | 8.74% 9   |
| <b>Total Respondents: 103</b>  |           |

**Q8 Which of the following types of data would your clients, or employer, consider most essential for inclusion in a first-rate needs assessment? (Choose top 3.)**

Answered: 102 Skipped: 2



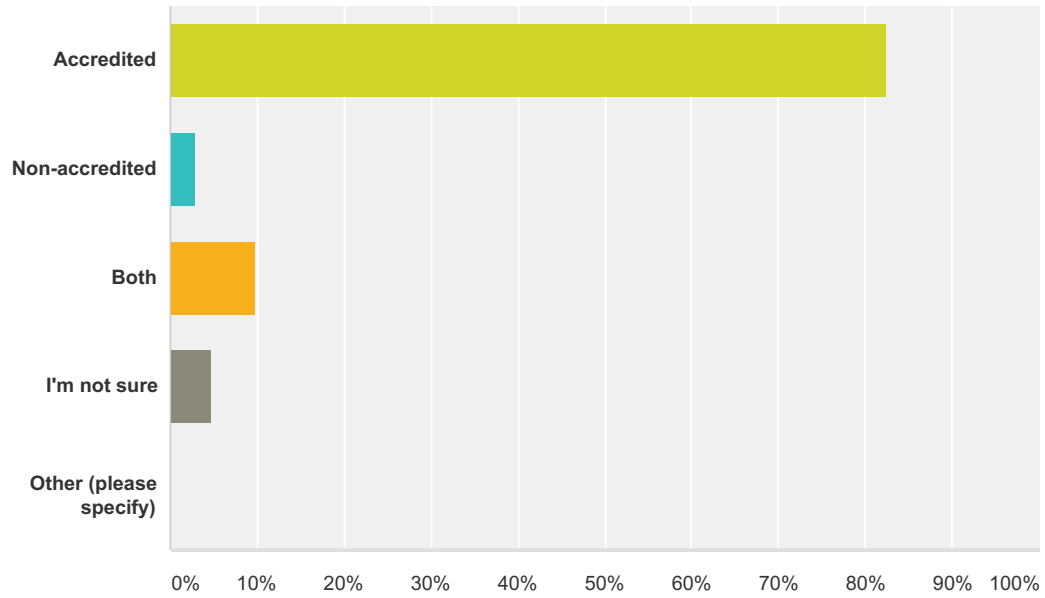
| Answer Choices   | Responses | Count |
|--|-----------|-------|
| Interviews with key opinion leaders                              | 46.08%    | 47    |
| Surveys of practice patterns among clinicians                    | 56.86%    | 58    |
| Environmental scan including summary of relevant clinical trials | 24.51%    | 25    |
| Basic epidemiology of disease state                              | 28.43%    | 29    |
| Evaluation reports from participants in previous activities      | 39.22%    | 40    |



|   |        |    |
|---|--------|----|
| Learning outcomes data (not eval reports) from other programs | 39.22% | 40 |
| Review of the medical literature                              | 81.37% | 83 |
| Review of the educational literature                          | 25.49% | 26 |
| Focus group report(s)   | 6.86%  | 7  |
| Chart audit(s), including performance improvement (PI) data   | 18.63% | 19 |
| Standardized patients   | 2.94%  | 3  |
| Other (please specify)  | 5.88%  | 6  |
| <b>Total Respondents: 102</b>                                 |        |    |

**Q9 Are the needs assessments you write typically used for accredited educational activities or for non-accredited educational activities? (Choose best answer.)**

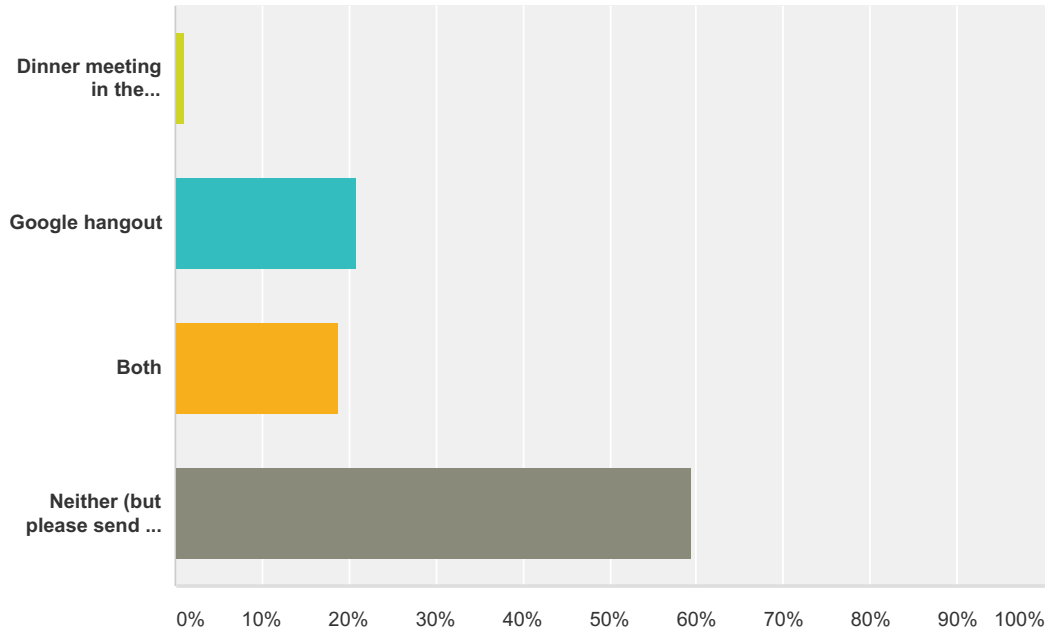
Answered: 103 Skipped: 1



| Answer Choices         | Responses  |
|------------------------|------------|
| Accredited             | 82.52% 85  |
| Non-accredited         | 2.91% 3    |
| Both                   | 9.71% 10   |
| I'm not sure           | 4.85% 5    |
| Other (please specify) | 0.00% 0    |
| <b>Total</b>           | <b>103</b> |

**Q10 Project investigators would like to supplement the quantitative data gained from this survey with qualitative data. Would you be interested in participating in a local dinner meeting, a Google hangout, or both, to discuss your answers with project investigators?**

Answered: 101 Skipped: 3



| Answer Choices                                  | Responses  |
|---|------------|
| Dinner meeting in the Philadelphia area         | 0.99% 1    |
| Google hangout                                  | 20.79% 21  |
| Both  | 18.81% 19  |
| Neither (but please send me the survey results) | 59.41% 60  |
| <b>Total</b>                                    | <b>101</b> |